



# LEGEND

38 Coronation Street

# NOTES:

1. Unless otherwise noted, all dimensions are in metres.
2. This map is a working copy and is not to be used as an official document. It is available for references purposes only and not to be reproduced without written approval from the City of Corner Brook.
3. 15 cm orthoimagery acquired in 2008.



38 Coronation Street

DRAWN BY:  
Paul Benoist

DATE:  
11/28/2017

SCALE:  
1:600

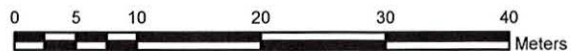
FIGURE:  
1

APPROVED BY:  
Brandon Duffy

COORD SYS:  
NAD 1983 MTM 3

ZONE:  
RMD

REVISION:  
0





DESCRIPTION OF LOT 150, ROAD "B", URBAN RENEWAL, CORNER BROOK WEST

All that piece or parcel of land at Road "B", Urban Renewal, in the City of Corner Brook, bounded and described as follows:

Starting at a point on the Easterly limit of Road "B", said point being found by running from the center of monument UB 3 NORTH Seventy degrees Thirty Eight minutes Nineteen seconds EAST (N 70° 38' 19" E) Seventy Four and Seventy Nine Hundredths feet (74.79').

Running thence from the above described starting point by the Easterly limit of Road "B" SOUTH Nineteen degrees Zero minutes Fifty Eight seconds WEST (S 19° 00' 58" W) Nineteen feet (19.0') to a point;

Thence continuing by the Easterly limit of Road "B" and a circular curve of radius Three Hundred Eighty Two feet (382.0') to a point which bears SOUTH Twenty Three degrees Forty Four minutes Twenty Seven seconds WEST (S 23° 44' 27" W) Sixty Two and Ninety Three Hundredths feet (62.93');

Thence by Lot 149 SOUTH Forty degrees Eleven minutes Forty Two seconds EAST (S 40° 11' 42" E) One Hundred Thirty Six and Eighty Two Hundredths feet (136.82');

Thence by Lot 157 NORTH Fifty Seven degrees Seven minutes Fifty Nine seconds EAST (N 57° 07' 59" E) Forty Eight and Eight Hundredths feet (48.08');

Thence by Lot 155 NORTH Thirty degrees Eighteen minutes Fifty Five seconds WEST (N 30° 18' 55" W) Thirty Four and Ninety Four Hundredths feet (34.94');

Thence by Lot 154 NORTH Thirty Two degrees Twenty Seven minutes Forty seconds WEST (N 32° 27' 40" W) Forty Eight and Sixty Nine Hundredths feet (48.69');

Thence by Lot 153 NORTH Thirty Three degrees Four minutes Fifty Five seconds WEST (N 33° 04' 55" W) Sixty Three and Thirty Four Hundredths feet (63.34');

Thence by Lot 152 NORTH Thirty Two degrees Twenty Three minutes Four seconds WEST (N 32° 23' 04" W) Thirty Five and Thirteen Hundredths feet (35.13') to the starting point.

Containing in all Nine Thousand Three Hundred Sixty Six (9,366) square feet more or less and being more particularly shown and delineated on the attached plan whereon it is outlined in red

All bearings given in the above description are referred to the City of Corner Brook Grid NORTH of the Corner Brook, Newfoundland Three (3) degree zone with the Central Meridian at Fifty Eight (58) degrees Thirty (30) minutes WEST Longitude.

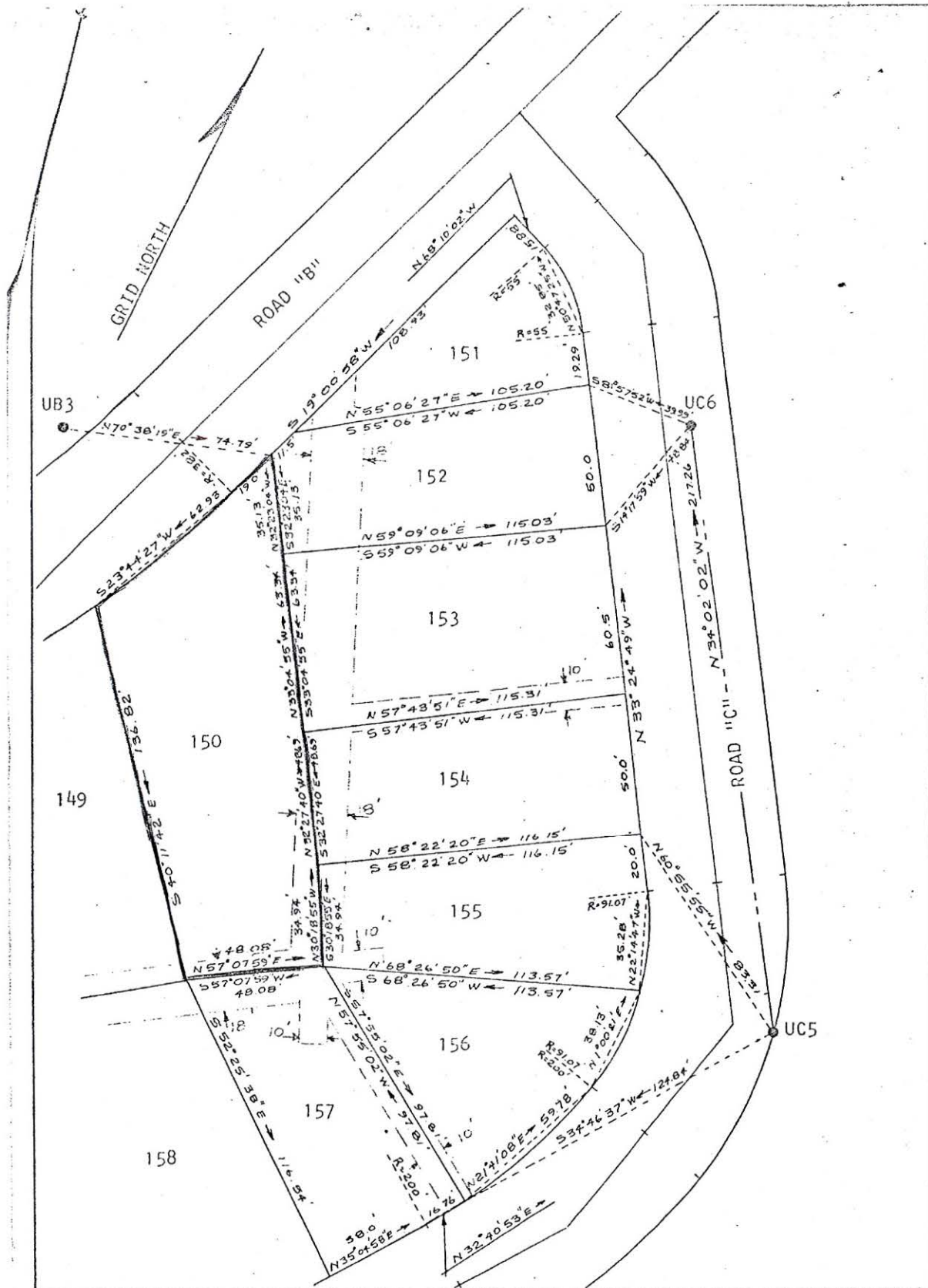
Reserving nevertheless from the above described parcel of land utility easements as shown on the attached plot plan.

February 1973

Drawing # 2971

GORMAN-BUTLER ASSOCIATES LIMITED





SCALE: 1"=20'

DATE: FEB. 1973

DWG. No.: 2971

SURVEYED BY:

DRAWN BY:

URBAN RENEWAL  
CORNER BROOK WEST

LOTS 150, 151, 152, 153, 154, 155, 156, 157



GORMAN-BUTLER ASSOC. LTD. P.O. BOX 96 ST. JOHN'S - P.O. BOX 434 CORNER LINDEN



