

City of Corner Brook Garbage and Recycling Collection

Two Stream Waste Collection

Effective July 16th, 2018, waste collection in the city of Corner Brook will be provided through a "two stream system" through Western Regional Waste Management (WRWM). With two stream waste collection, residents will be permitted to use only clear bags for garbage and transparent blue bags for recyclables. Recyclables of all types are to be placed in the same bag where it will be then sorted at a specialized facility. This makes recycling easy and convenient for residents and businesses.

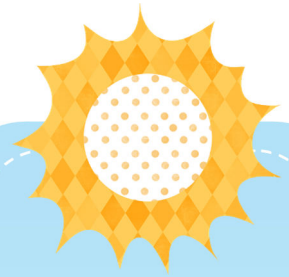
What Goes in the Bags?

Items permitted in each clear and blue bag is listed on the following page. It is important that any recyclables that are soiled are rinsed out (for example, milk cartons, soup cans, and shampoo containers should be rinsed). Recyclables must also be completely empty (for example, no full containers of food). All recyclables can be placed in the same blue bag for sorting at the regional facility.

To accommodate privacy needs, you may use two small non-transparent bags in each clear garbage bag. Used grocery bags work great as privacy bags. Items like kitty litter and dog waste must also be placed in a smaller bag within the clear garbage bag. Also always remember to place sharp objects such as broken glass in a puncture-proof container in the clear garbage bag.

Contents and Bag Limit

There is still a limit of four garbage bags per week (clear), however there is currently no limit to the number of recycling bags (blue). Tags can be purchased at \$1.00 each for each additional garbage bag. As recycling is mandatory, only garbage that is properly sorted in their respective clear or blue bags will be picked up. If you find a bright pink sticker on one of your bags at the curb, it is because certain recycling rules were not followed. Please refer to the checked box on the pink sticker for details.



In a Nutshell

Two Stream Recycling/Garbage Pickup will begin on July 16th. This requires mandatory separation of recyclables from garbage at your home or business.

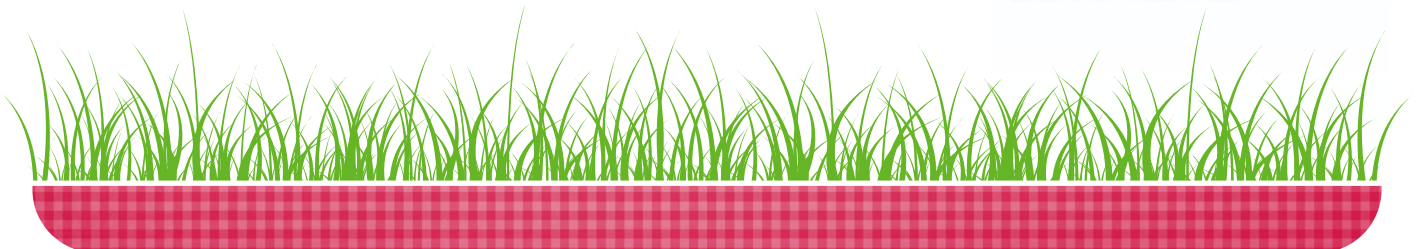
Garbage goes in clear bags while all recyclables go in transparent blue bags (available at many retailers).

Place all types of recyclables in the blue bags. In other words, recyclable cans, paper, and plastic can all go in the same blue bag.

Residents are still limited to four garbage bags per week. Recycling bags are unlimited.

For More Information

If you require additional information, please contact Western Regional Waste Management or the City of Corner Brook



GARBAGE (Place in Clear Bags Only, 4 Bag Limit)

Paper

Coffee Cups and Take Out Drink Containers
Gift Bags and Wrapping Paper
Paper Napkins
Paper Towels
Tissues
Wax Paper

Plastic

Bags
Bottle Caps
Bubble Envelopes
Candy and Granola Bar Wrappers
CDs/DVDs and Their Cases
Chip and Snack Bags
Cutlery
Individual Condiment Packages
Plastic Wrap and Baggies
Straws

Other

Blankets and Bed Sheets
Electrical Cords
Ceramic Dishes
Clothing
Diapers
Empty Aerosol Cans
Food Waste
Full or Unopened Food Containers
Glass Jars
Kitty Litter
Laundry Baskets and Hampers
Pet Food Bags
Pots and Pans
Sharp Objects (must be in puncture-proof container)
Styrofoam
Toys

Two small privacy bags (non-transparent) may be placed inside each clear garbage bag with your household garbage

RECYCLABLES (Place Emptied and Rinsed Items in Transparent Blue bags)

Boxboard

Drink and Coffee Trays
Egg Cartons
Food Boxes (example: cereal boxes)
Shoe Boxes
Paper Towel/Toilet Paper Rolls

Cardboard

Corrugated Boxes
Packaging Materials
Pizza Boxes

Metal Containers

Aluminum Cans (example: pop cans)
Disposable Foil Containers (example: pie plates)
Steel and Tin Cans (example: soup and tuna cans)
Aluminum Foil

Mixed Paper

Books (with hardcovers removed)
Computer Paper
Construction/Craft Paper
Envelopes
Exercise Books (with coils removed)
Glossy Paper
Loose Leaf
Magazines and Catalogues
Newspapers and Flyers (remove plastic bags)
Paper Bags
Phone Books
Sticky Notes

Paper Containers:

Gable Top Containers (example: juice, milk, molasses, broth)

Plastic Containers:

Plastic Beverage Containers (example: pop, water bottles)
Juice Pouches
Yogurt Drink Bottles
Plastic Flower Pots
Plastic Food Containers (example: ketchup, mayo, honey)
Household Cleaner Bottles (example: laundry detergent)
Plastic Spray Bottles (example: glass cleaner)
Windshield Wash Bottles
Plastic Toiletry Bottles (example: dish soap, shampoo)
Over the Counter Medication Bottles
Plastic Trays and Clamshell Trays (example: strawberry trays)
Plastic Tubs and Lids (example: margarine, sour cream)

