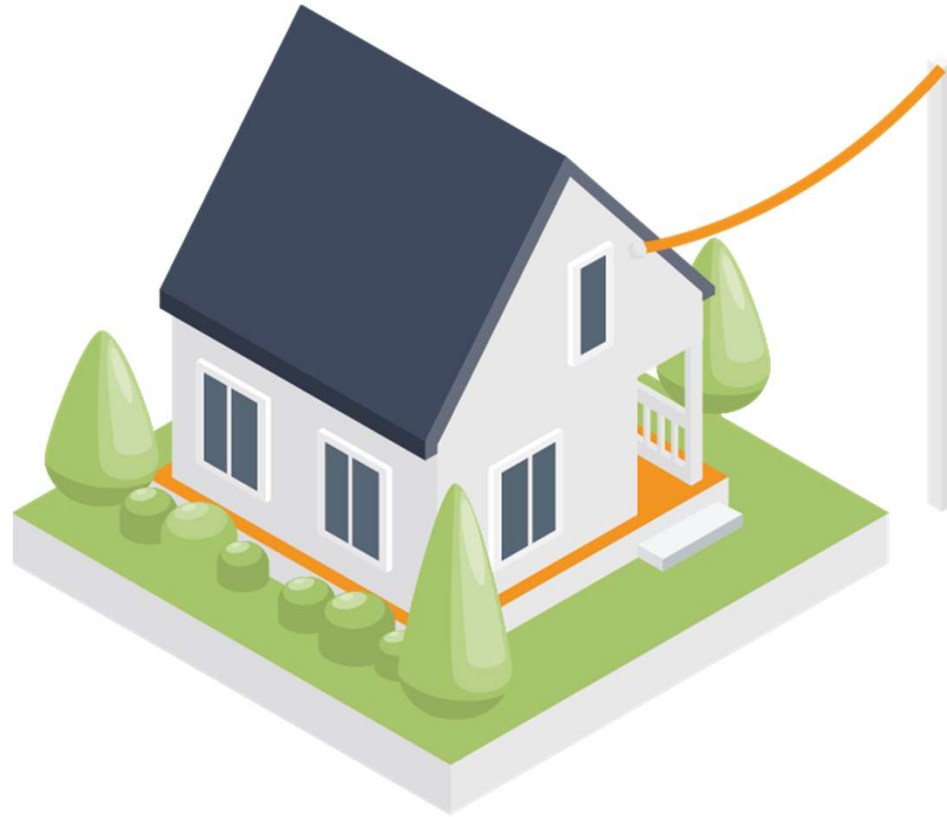


# CITY OF CORNER BROOK



## POSSIBLE LANDS FOR DEVELOPMENT

# RESIDENTIAL PROPERTIES



## POSSIBLE LAND FOR DEVELOPMENT

**Parcel ID:** 271302

**Location:** Corporal Pinksen Memorial Drive

**Zone:** Innovation District (ID)

**Approximate Size (m<sup>2</sup>):** 4,065

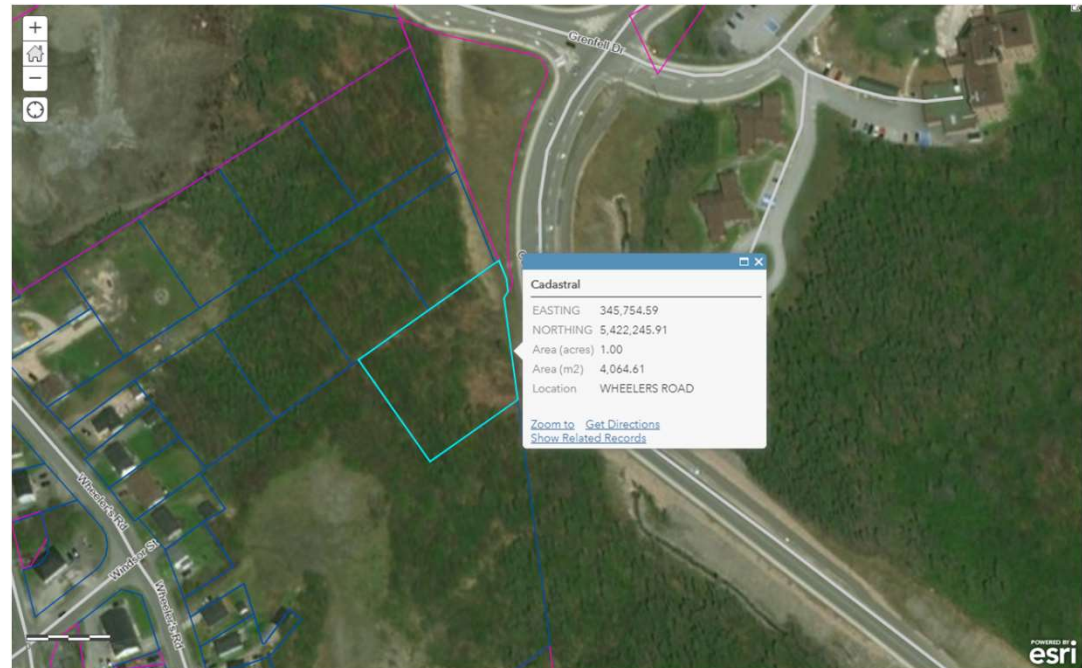
**Approximate Frontage (m):** 67

**Approximate Depth (m):** 67

**Water Available:** Yes

**Sewer Available:** Yes

**Owner:** Private



# POSSIBLE LAND FOR DEVELOPMENT

**Parcel ID:** N/A

**Location:** Cossitt Place

**Zone:** Residential Medium Density (RMD)

**Approximate Size (m<sup>2</sup>):** 14,078

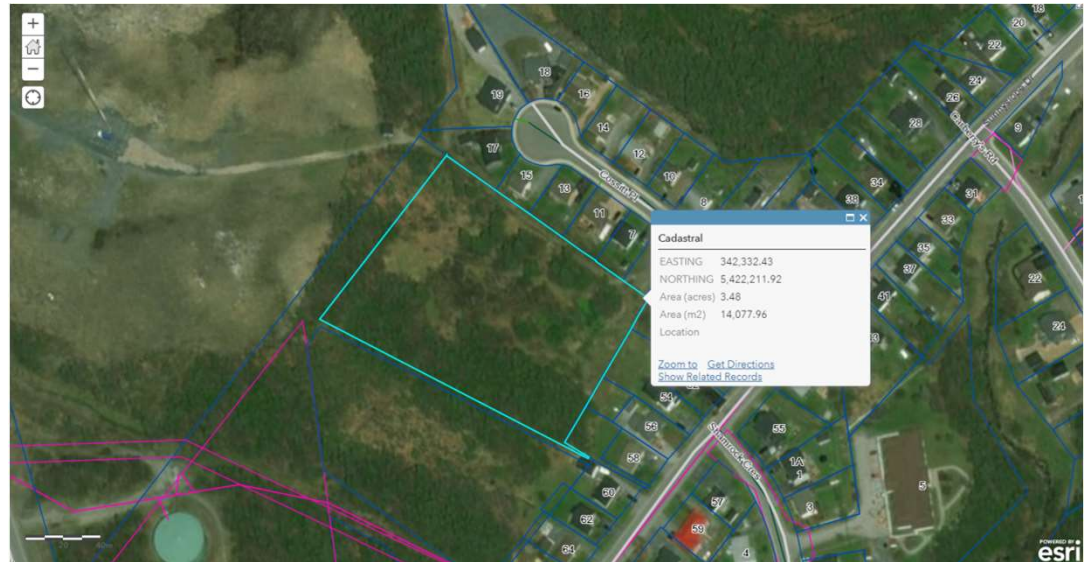
**Approximate Frontage (m):** 133

**Approximate Depth (m):** 111

**Water Available:** No

**Sewer Available:** No

**Owner:** Private



## POSSIBLE LAND FOR DEVELOPMENT

**Parcel ID:** 045120

**Location:** Elizabeth Street

**Zone:** Residential High Density (RHD)

**Approximate Size (m<sup>2</sup>):** 24,189

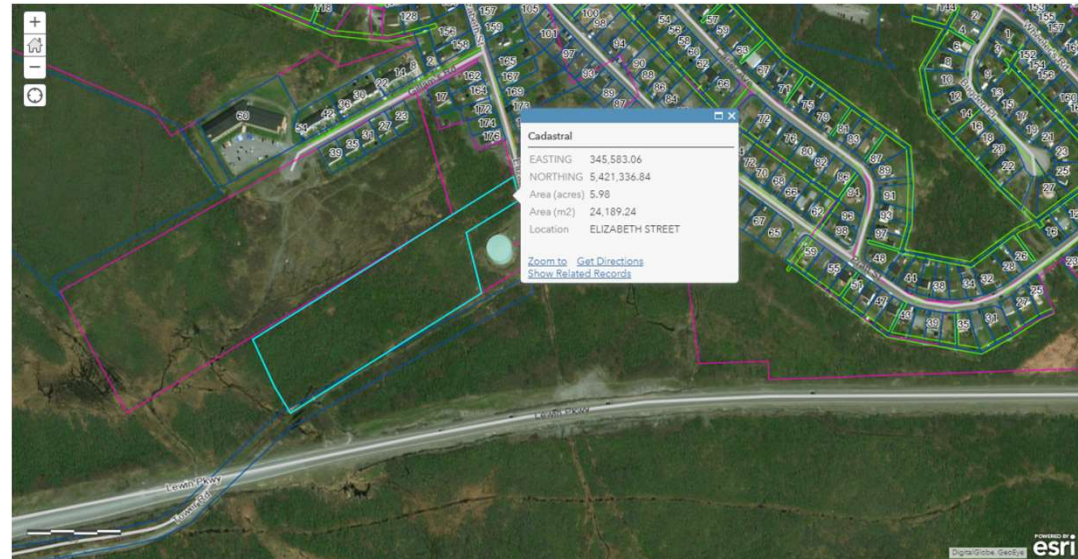
**Approximate Frontage (m):** 90

**Approximate Depth (m):** 250

**Water Available:** Yes

**Sewer Available:** Yes

**Owner:** Private



## POSSIBLE LAND FOR DEVELOPMENT

**Parcel ID:** 045861

**Location:** Gilliam's Road

**Zone:** Residential Medium Density (RMD)  
& Comprehensive Residential Development  
Area (CRDA) & Rural (R)

**Approximate Size (m<sup>2</sup>):** 37,519

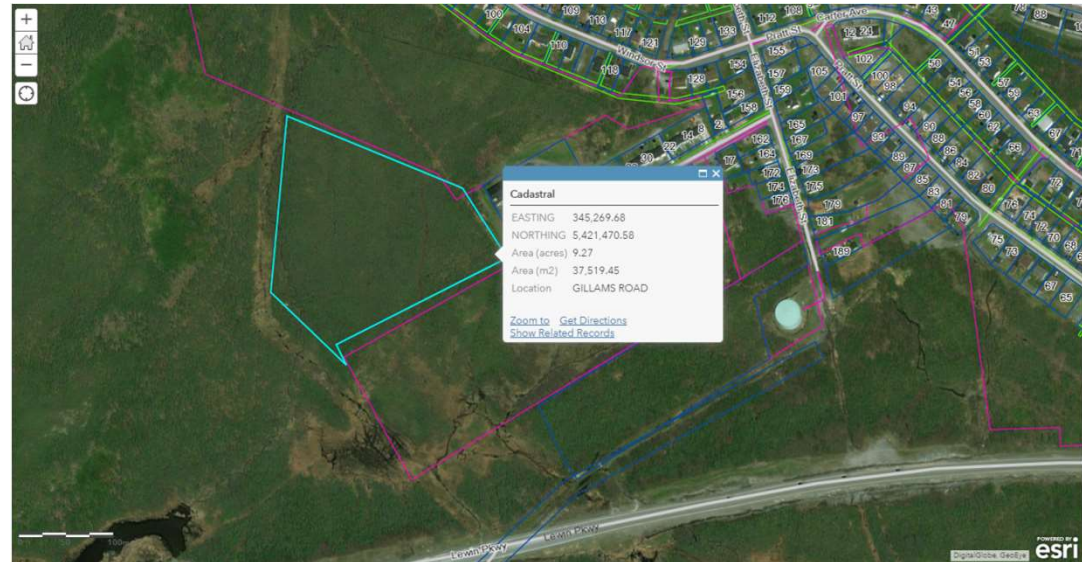
**Approximate Frontage (m):** 90

**Approximate Depth (m):** 210

**Water Available:** No

**Sewer Available:** No

**Owner:** Private



## POSSIBLE LAND FOR DEVELOPMENT

**Parcel ID:** 194252

**Location:** Gilliam's Road

**Zone:** Comprehensive Residential  
Development Area (CRDA) & Rural (R)

**Approximate Size (m<sup>2</sup>):** 96,074

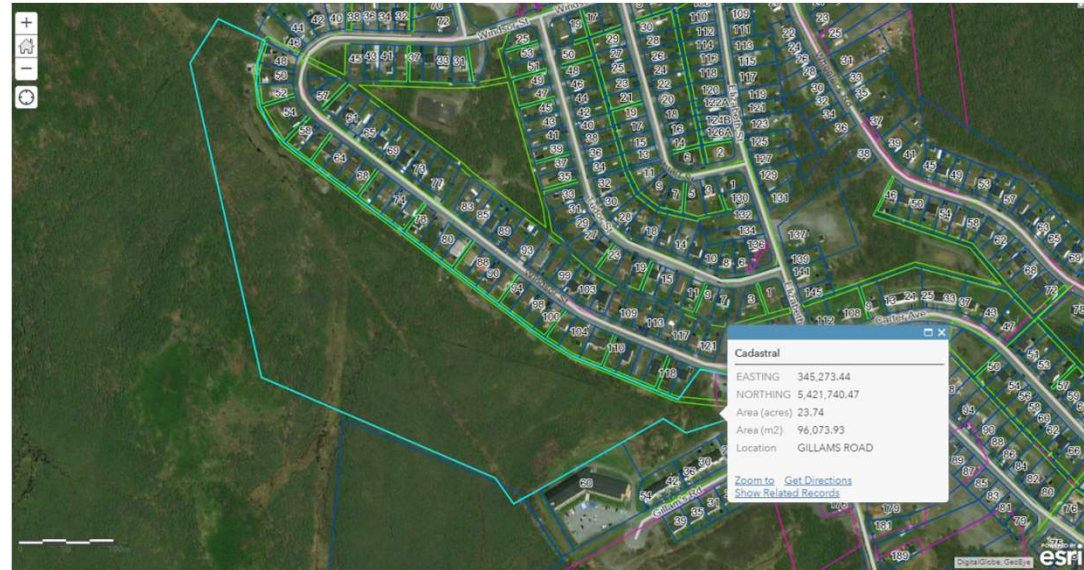
**Approximate Frontage (m):** 700

**Approximate Depth (m):** 180

**Water Available:** Yes

**Sewer Available:** Yes

**Owner:** City of Corner Brook



# POSSIBLE LAND FOR DEVELOPMENT

**Parcel ID:** 046445

**Location:** Hilliard's Road

**Zone:** Residential Medium Density (RMD)

**Approximate Size (m<sup>2</sup>):** 2,532

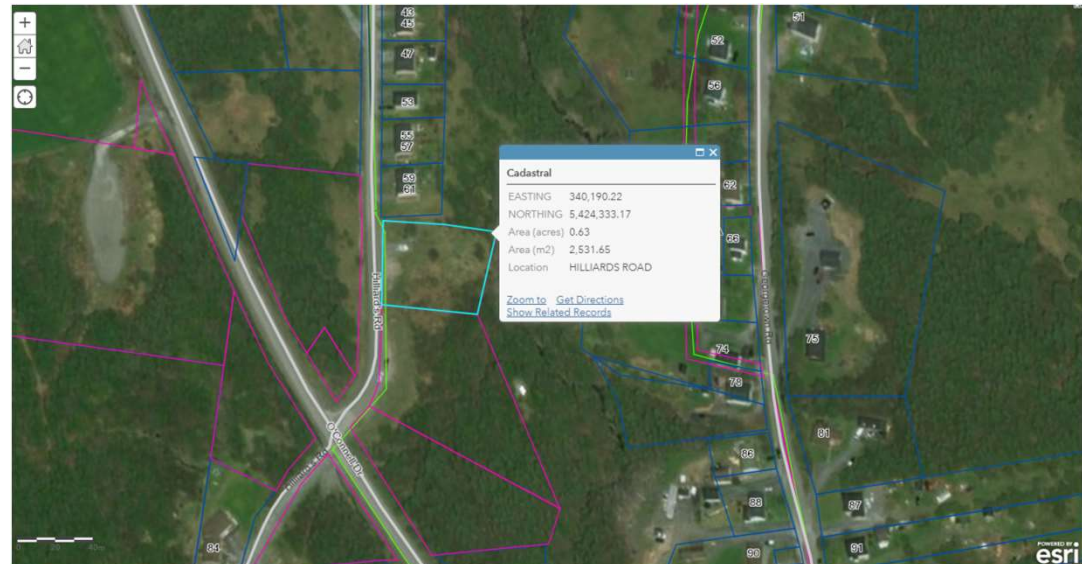
**Approximate Frontage (m):** 43

**Approximate Depth (m):** 60

**Water Available:** Yes

**Sewer Available:** Yes

**Owner:** City of Corner Brook





# POSSIBLE LAND FOR DEVELOPMENT

**Parcel ID:** 046447

**Location:** Hilliard's Road

**Zone:** Residential Medium Density (RMD)

**Approximate Size (m<sup>2</sup>):** 5,332

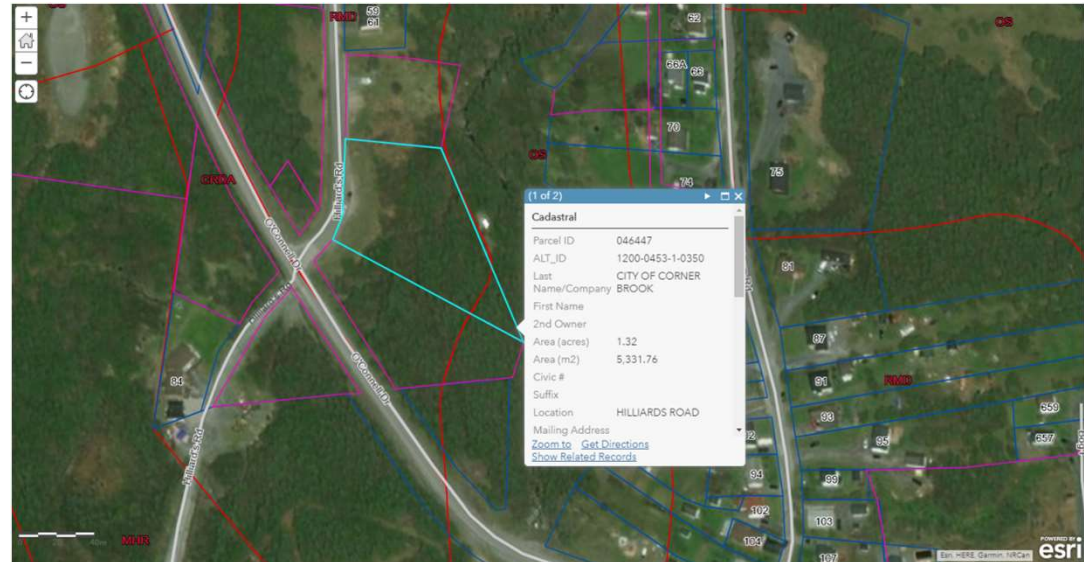
**Approximate Frontage (m):** 55

**Approximate Depth (m):** 70

**Water Available:** No

**Sewer Available:** Yes

**Owner:** City of Corner Brook



## POSSIBLE LAND FOR DEVELOPMENT

**Parcel ID:** N/A

**Location:** Hilliard's Road

**Zone:** Residential Medium Density (RMD) & Open Space (OS)

**Approximate Size (m<sup>2</sup>):** 4,313

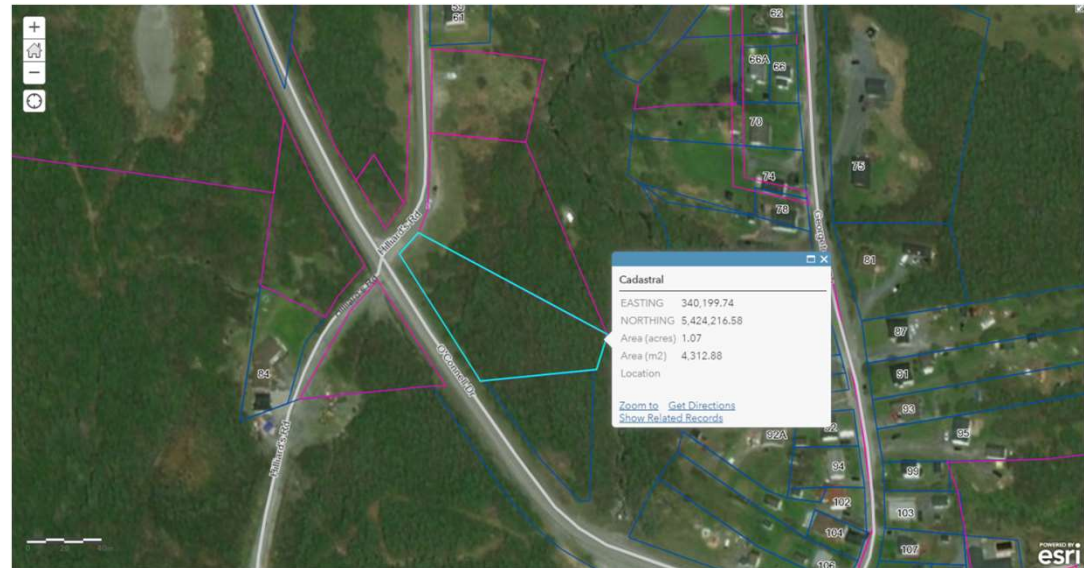
**Approximate Frontage (m):** 14

**Approximate Depth (m):** 90

**Water Available:** No

**Sewer Available:** Yes

**Owner:** City of Corner Brook



# POSSIBLE LAND FOR DEVELOPMENT

**Parcel ID:** 046429

**Location:** Hilliard's Road

**Zone:** Residential Medium Density (RMD)

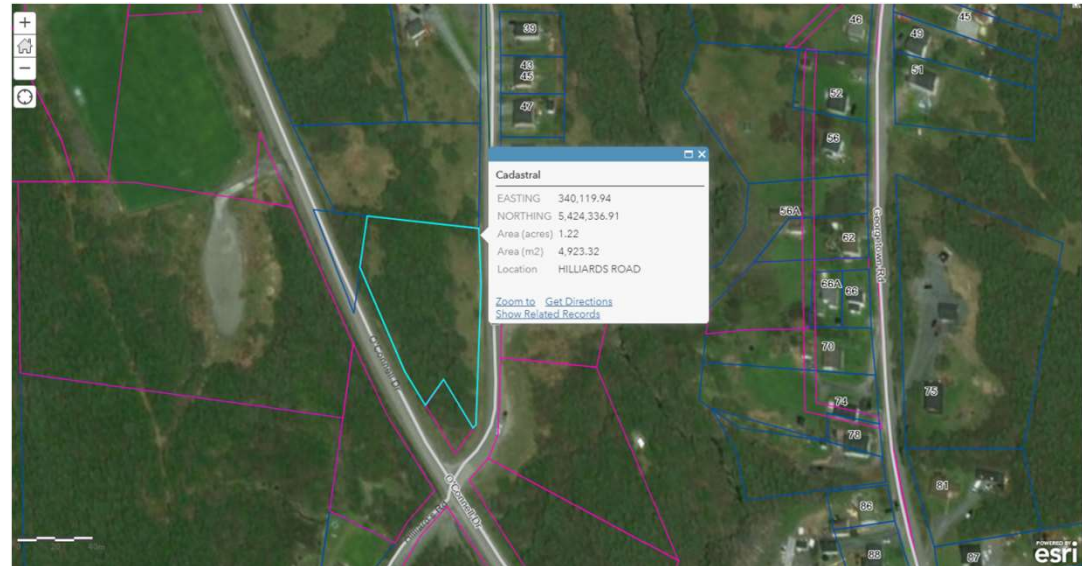
**Approximate Size (m<sup>2</sup>):** 4,923

**Approximate Frontage (m):** 106

**Approximate Depth (m):** 61

**Water Available:** Yes

**Sewer Available:** Yes



## POSSIBLE LAND FOR DEVELOPMENT

**Parcel ID:** N/A

**Location:** MacDonald Brown Drive

**Zone:** Residential Medium Density (RMD)

**Approximate Size (m<sup>2</sup>):** 15,701

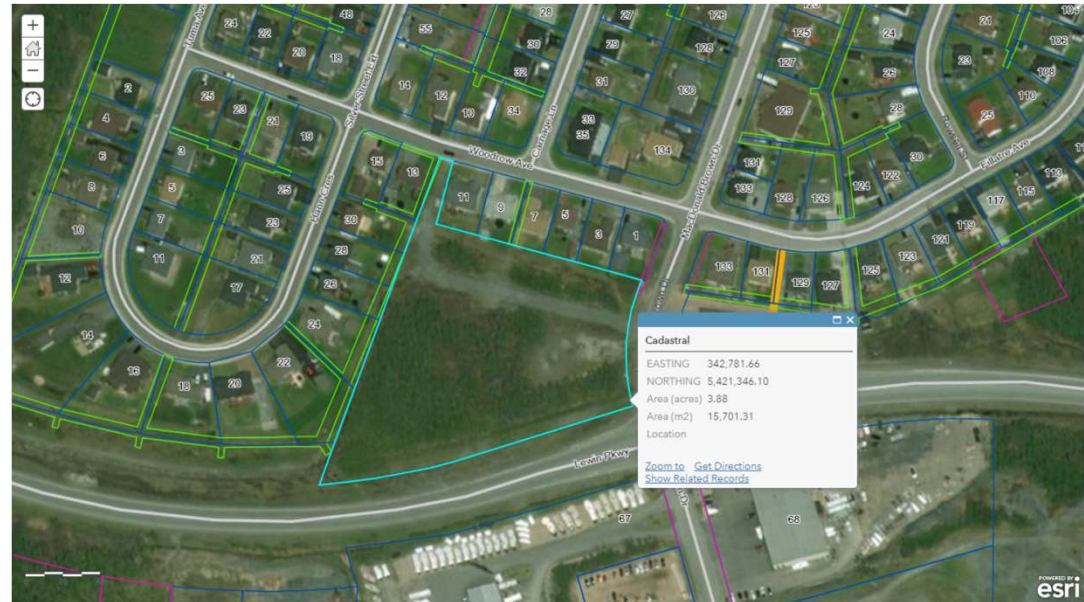
**Approximate Frontage (m):** 67

**Approximate Depth (m):** 143

**Water Available:** Yes

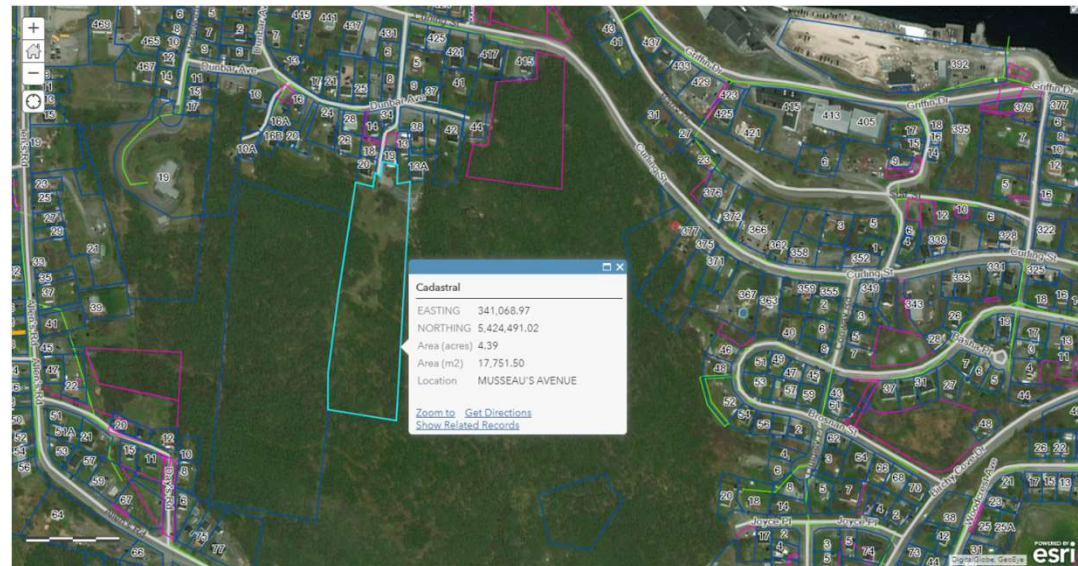
**Sewer Available:** Yes

**Owner:** Private



# POSSIBLE LAND FOR DEVELOPMENT

**Parcel ID:** 047623  
**Location:** Musseau's Avenue  
**Zone:** Open Space (OS)  
**Approximate Size (m<sup>2</sup>):** 17,752  
**Approximate Frontage (m):** 59  
**Approximate Depth (m):** 246  
**Water Available:** No  
**Sewer Available:** Yes  
**Owner:** City of Corner Brook



## POSSIBLE LAND FOR DEVELOPMENT

**Parcel ID:** N/A

**Location:** O'Connell Drive

**Zone:** Residential Medium Density (RMD)

**Approximate Size (m<sup>2</sup>):** 25,010

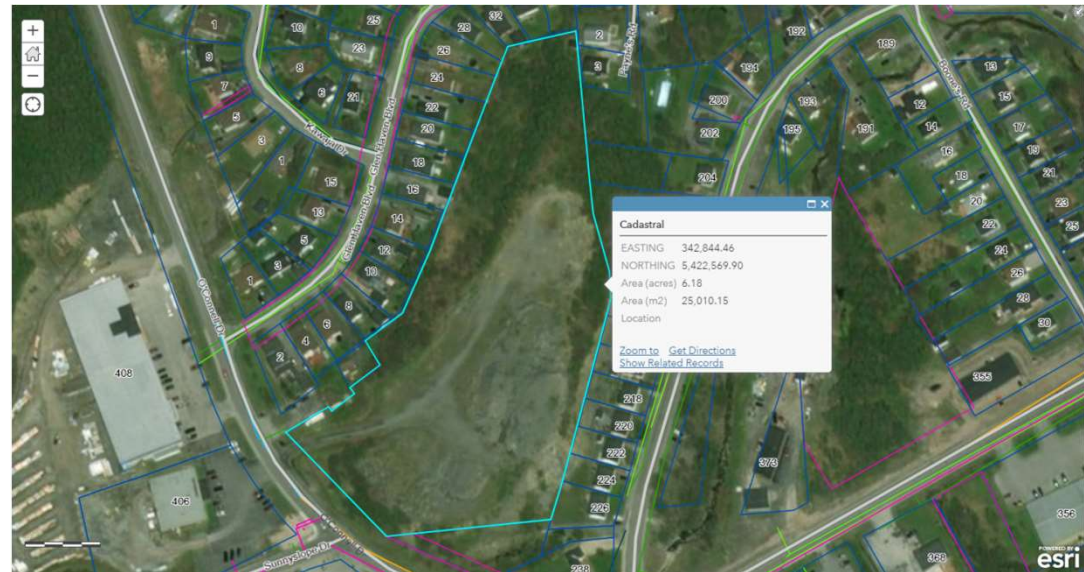
**Approximate Frontage (m):** 78

**Approximate Depth (m):** 280

**Water Available:** Yes

**Sewer Available:** No

**Owner:** Private



# POSSIBLE LAND FOR DEVELOPMENT

**Parcel ID:** 047811

**Location:** O'Connell Drive

**Zone:** Rural (R)

**Approximate Size (m<sup>2</sup>):** 54,519

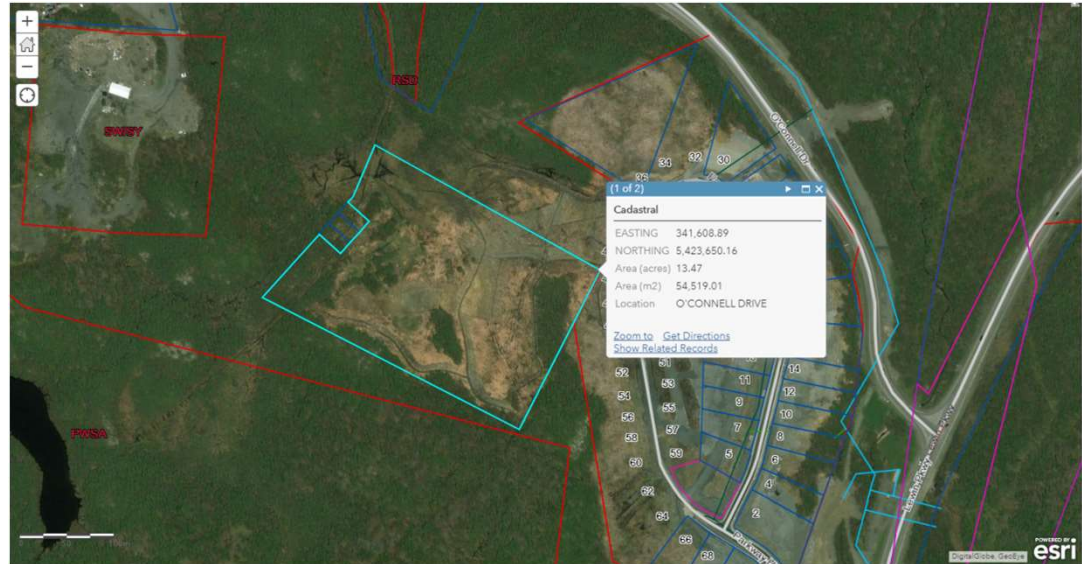
**Approximate Frontage (m):** 193

**Approximate Depth (m):** 297

**Water Available:** No

**Sewer Available:** No

**Owner:** Private



# POSSIBLE LAND FOR DEVELOPMENT

**Parcel ID:** 047919

**Location:** O'Connell Drive

**Zone:** Comprehensive Residential  
Development Area (CRDA)

**Approximate Size (m<sup>2</sup>):** 6,398

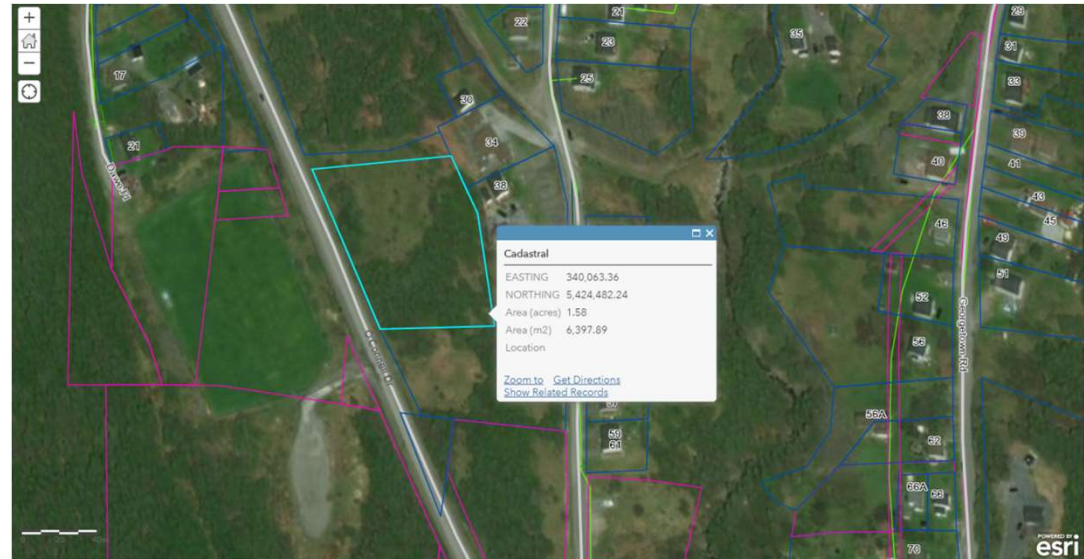
**Approximate Frontage (m):** 91

**Approximate Depth (m):** 74

**Water Available:** No

**Sewer Available:** No

**Owner:** City of Corner Brook





# POSSIBLE LAND FOR DEVELOPMENT

**Parcel ID:** 047920

**Location:** O'Connell Drive

**Zone:** Comprehensive Residential  
Development Area (CRDA)

**Approximate Size (m<sup>2</sup>):** 11,173

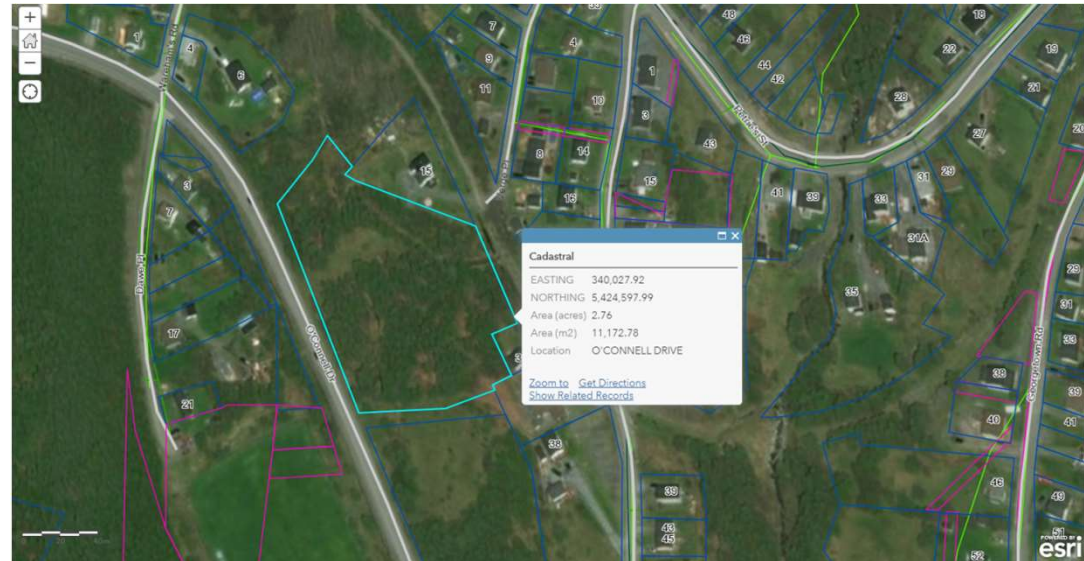
**Approximate Frontage (m):** 120

**Approximate Depth (m):** 95

**Water Available:** No

**Sewer Available:** No

**Owner:** Private



## POSSIBLE LAND FOR DEVELOPMENT

**Parcel ID:** 200108

**Location:** O'Connell Drive

**Zone:** Rural (R)

**Approximate Size (m<sup>2</sup>):** 130,781

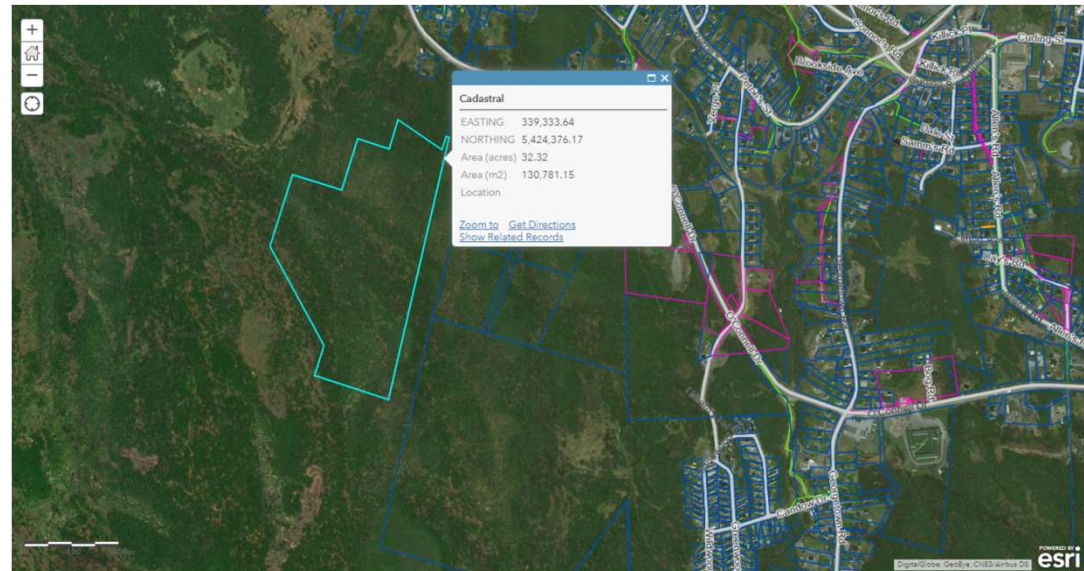
**Approximate Frontage (m):** 120

**Approximate Depth (m):** 500

**Water Available:** No

**Sewer Available:** No

**Owner:** Private



# POSSIBLE LAND FOR DEVELOPMENT

**Parcel ID:** 048353

**Location:** Petries Street

**Zone:** Residential Medium Density (RMD)

**Approximate Size (m<sup>2</sup>):** 7,543

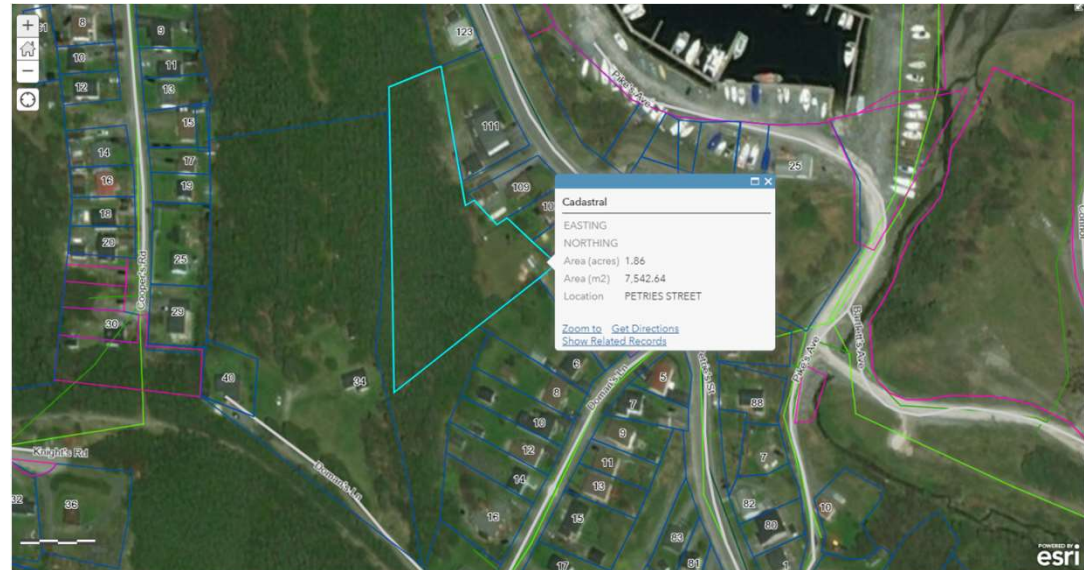
**Approximate Frontage (m):** 120

**Approximate Depth (m):** 65

**Water Available:** Yes

**Sewer Available:** Yes

**Owner:** Private



# POSSIBLE LAND FOR DEVELOPMENT

**Parcel ID:** 049719

**Location:** Stones Road

**Zone:** Residential Medium Density (RMD)

**Approximate Size (m<sup>2</sup>):** 12,563

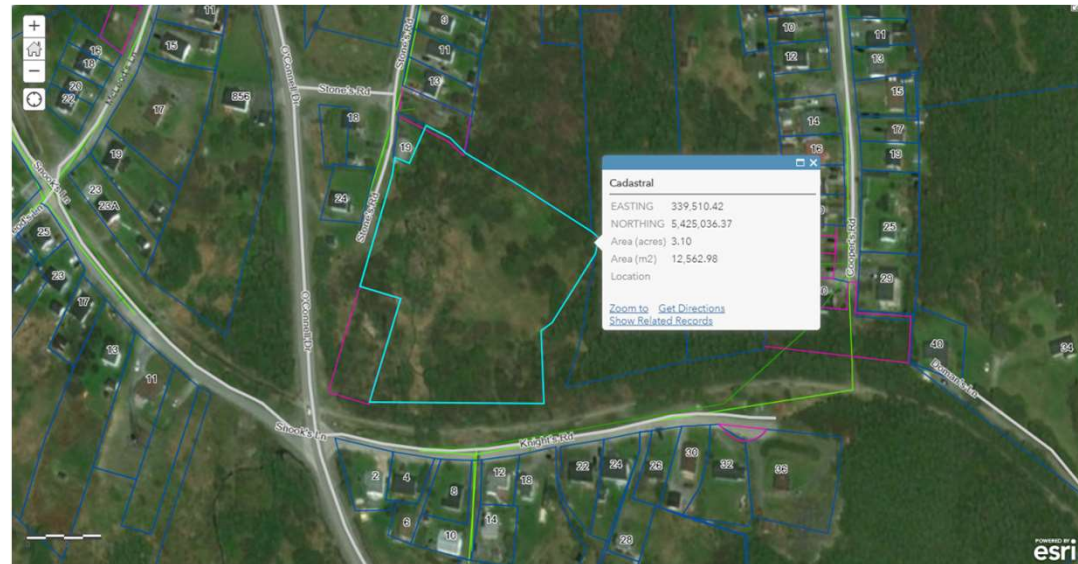
**Approximate Frontage (m):** 70

**Approximate Depth (m):** 118

**Water Available:** Yes

**Sewer Available:** Yes

**Owner:** Private



# POSSIBLE LAND FOR DEVELOPMENT

**Parcel ID:** 049789

**Location:** Sunny Slope Drive

**Zone:** Residential Medium Density (RMD)

**Approximate Size (m<sup>2</sup>):** 10,838

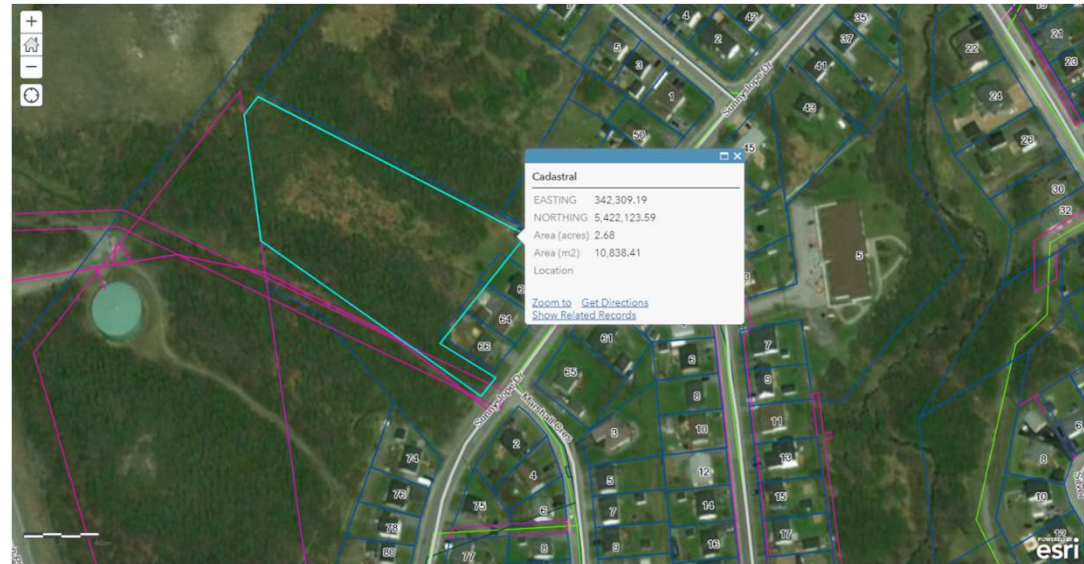
**Approximate Frontage (m):** 80

**Approximate Depth (m):** 130

**Water Available:** Yes

**Sewer Available:** Yes

**Owner:** Private



## POSSIBLE LAND FOR DEVELOPMENT

**Parcel ID:** N/A

**Location:** Silver Street

**Zone:** Residential Medium Density (RMD)

**Approximate Size (m<sup>2</sup>):** 12,500

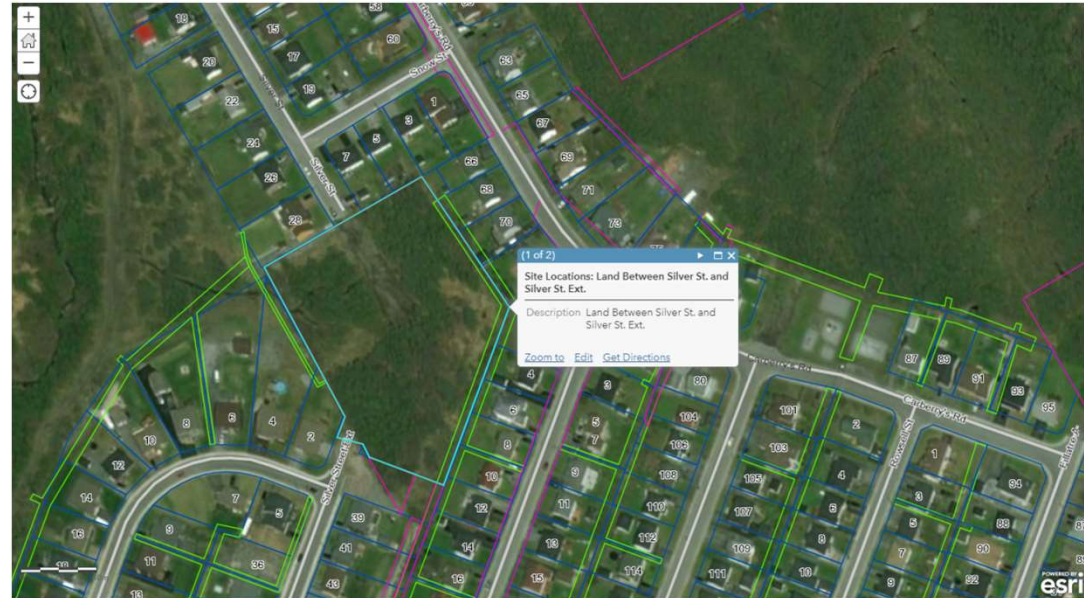
**Approximate Frontage (m):** 100

**Approximate Depth (m):** 113

**Water Available:** Yes

**Sewer Available:** Yes

**Owner:** Private



# POSSIBLE LAND FOR DEVELOPMENT

**Parcel ID:** 050706

**Location:** Wheelers Road

**Zone:** Innovation District (ID) &  
Residential Medium Density (RMD)

**Approximate Size (m<sup>2</sup>):** 21,953

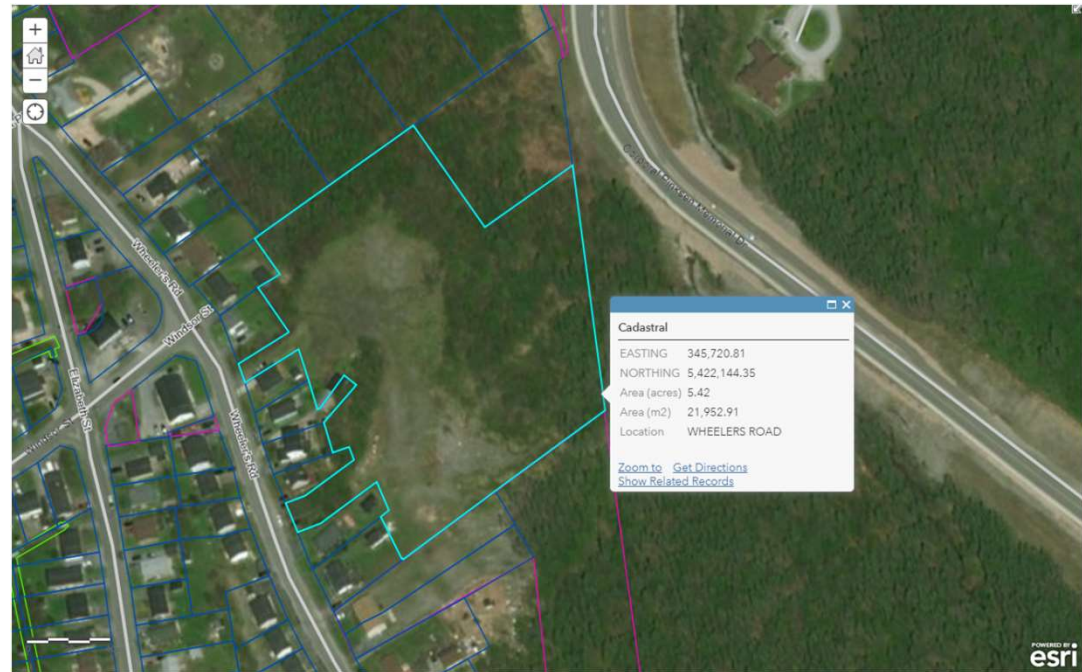
**Approximate Frontage (m):** 24

**Approximate Depth (m):** 180

**Water Available:** Yes

**Sewer Available:** Yes

**Owner:** Private



## POSSIBLE LAND FOR DEVELOPMENT

**Parcel ID:** 045725

**Location:** Georgetown Road

**Zone:** Rural(R)

**Approximate Size (m<sup>2</sup>):** 68,140

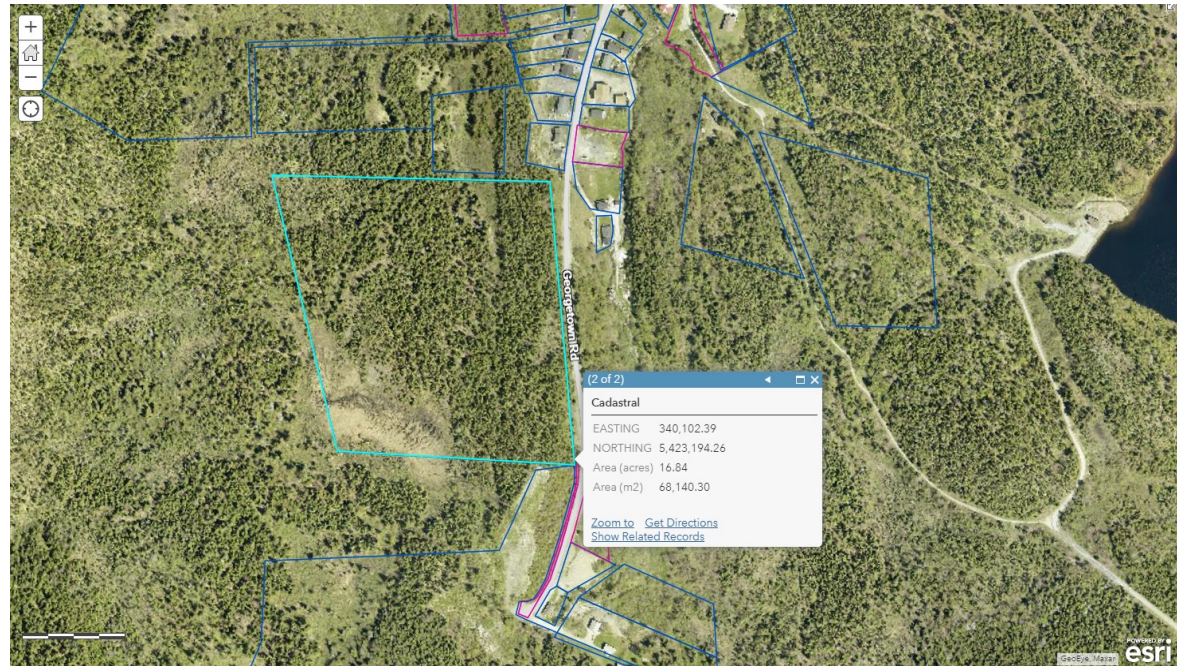
**Approximate Frontage (m):** 272

**Approximate Depth (m):** 270

**Water Available:** No

**Sewer Available:** No

**Owner:** Private





# POSSIBLE LAND FOR DEVELOPMENT

**Parcel ID:** N/A  
**Location:** Georgetown Road  
**Zone:** Rural(R)  
**Approximate Size (m<sup>2</sup>):** 111,344  
**Approximate Frontage (m):** 155  
**Approximate Depth (m):** 206  
**Water Available:** No  
**Sewer Available:** No  
**Owner:** Private



# POSSIBLE LAND FOR DEVELOPMENT

**Parcel ID:** N/A

**Location:** Georgetown Road

**Zone:** Residential Medium Density (RMD), Comprehensive Residential Development Area (CRDA), Environmental Protection (EP)

**Approximate Size (m<sup>2</sup>):** 56,860

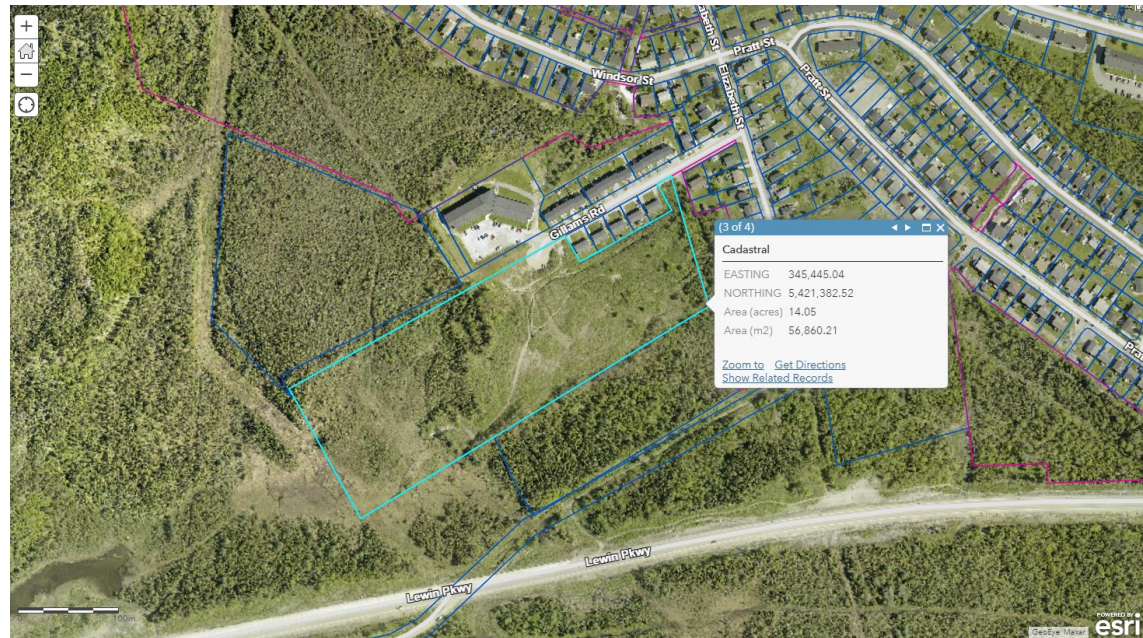
**Approximate Frontage (m):** 50

**Approximate Depth (m):** 138

**Water Available:** Yes

**Sewer Available:** Yes

**Owner:** City



# POSSIBLE LAND FOR DEVELOPMENT

**Parcel ID:** N/A  
**Location:** O'Connell Drive/Stones Road  
**Zone:** Residential Medium Density (RMD)  
**Approximate Size (m<sup>2</sup>):** 12,562  
**Approximate Frontage (m):** 50  
**Approximate Depth (m):** 118  
**Water Available:** Yes  
**Sewer Available:** Yes  
**Owner:** City



# COMMERCIAL PROPERTIES



# POSSIBLE LAND FOR DEVELOPMENT

**Parcel ID:** 197370

**Location:** Confederation Drive

**Zone:** Large Scale Commercial (LSC)

**Approximate Size (m<sup>2</sup>):** 19,698

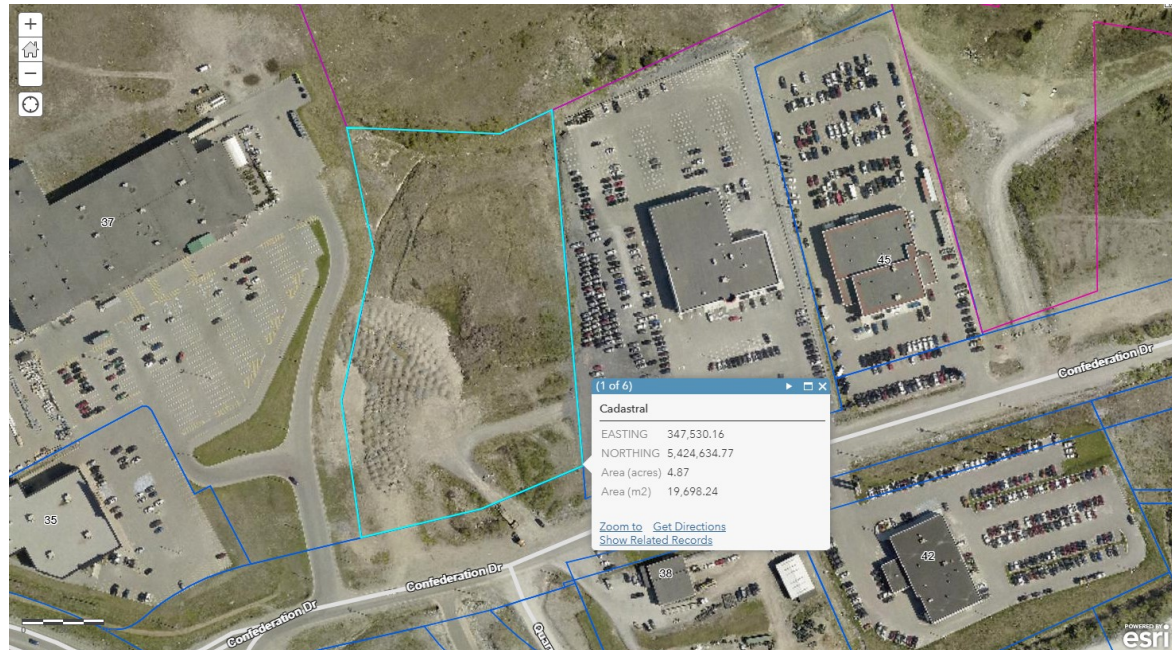
**Approximate Frontage (m):** 114

**Approximate Depth (m):** 200

**Water Available:** Yes

**Sewer Available:** Yes

**Owner:** Private



## POSSIBLE LAND FOR DEVELOPMENT

**Parcel ID:** N/A

**Location:** Lundrigan Drive

**Zone:** General Industrial (GI)

**Approximate Size (Acres):** 15

**Approximate Frontage (m):** N/A

**Approximate Depth (m):** N/A

**Water Available:** Yes

**Sewer Available:** Yes

**Power:** 2 Phase with 3 Phase in Sections

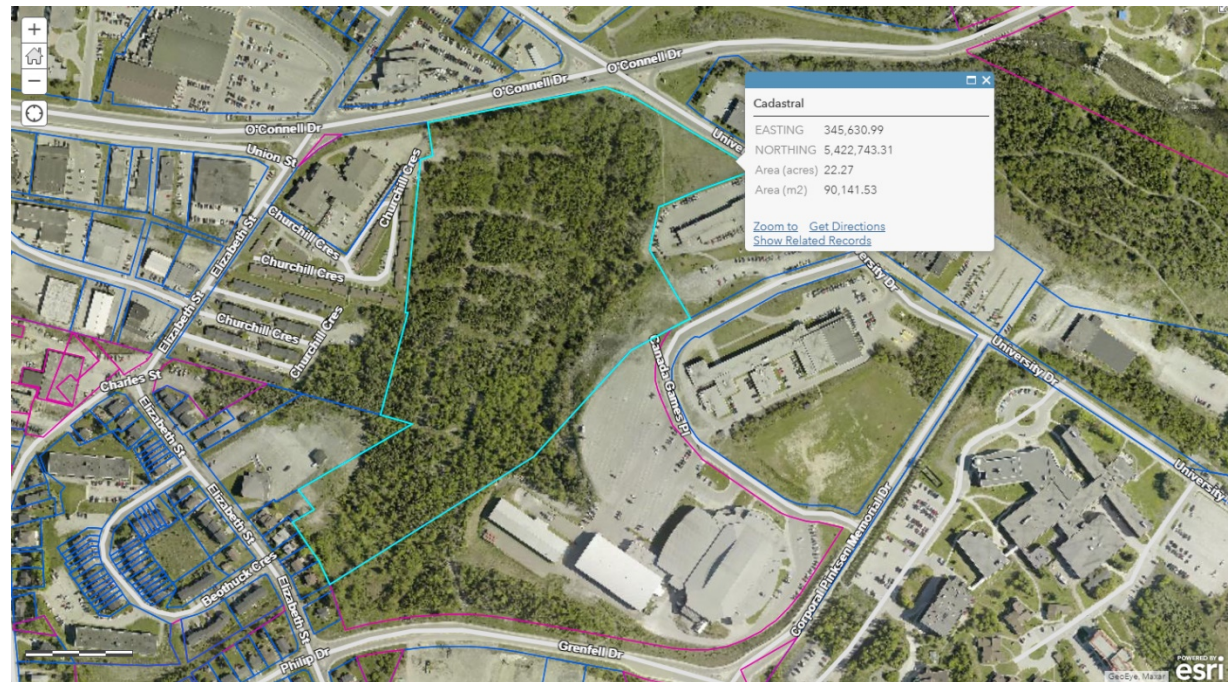
**Price :** \$32,500/Acre

**Owner:** City of Corner Brook



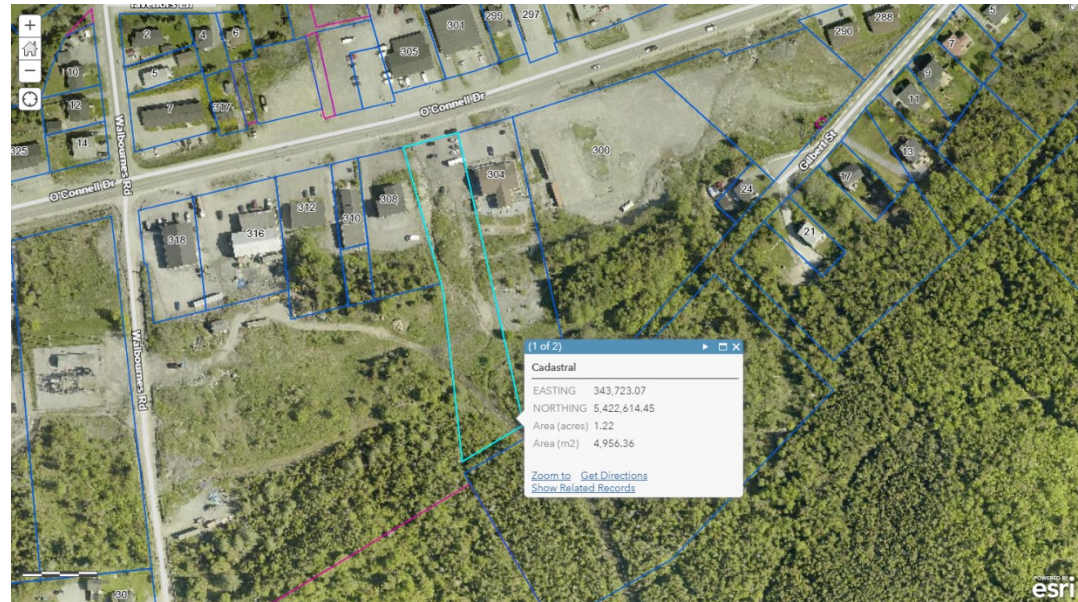
# POSSIBLE LAND FOR DEVELOPMENT

**Parcel ID:** 043850  
**Location:** O'Connell Drive  
**Zone:** Innovation District (ID) & Residential Medium Density (RMD)  
**Approximate Size (m<sup>2</sup>):** 90,142  
**Approximate Frontage (m):** 180  
**Approximate Depth (m):** 360  
**Water Available:** Yes  
**Sewer Available:** Yes  
**Owner:** Private



# POSSIBLE LAND FOR DEVELOPMENT

**Parcel ID:** 047778  
**Location:** O'Connell Drive  
**Zone:** Light Industrial (LI)  
**Approximate Size (m<sup>2</sup>):** 4,956  
**Approximate Frontage (m):** 31  
**Approximate Depth (m):** 170  
**Water Available:** Yes  
**Sewer Available:** Yes  
**Owner:** Private





# POSSIBLE LAND FOR DEVELOPMENT

**Parcel ID:** 187216

**Location:** Riverside Drive

**Zone:** Waterfront Mixed Use (WMU)

**Approximate Size (m<sup>2</sup>):** 75,899

**Approximate Frontage (m):** 288

**Approximate Depth (m):** 300

**Water Available:** Yes

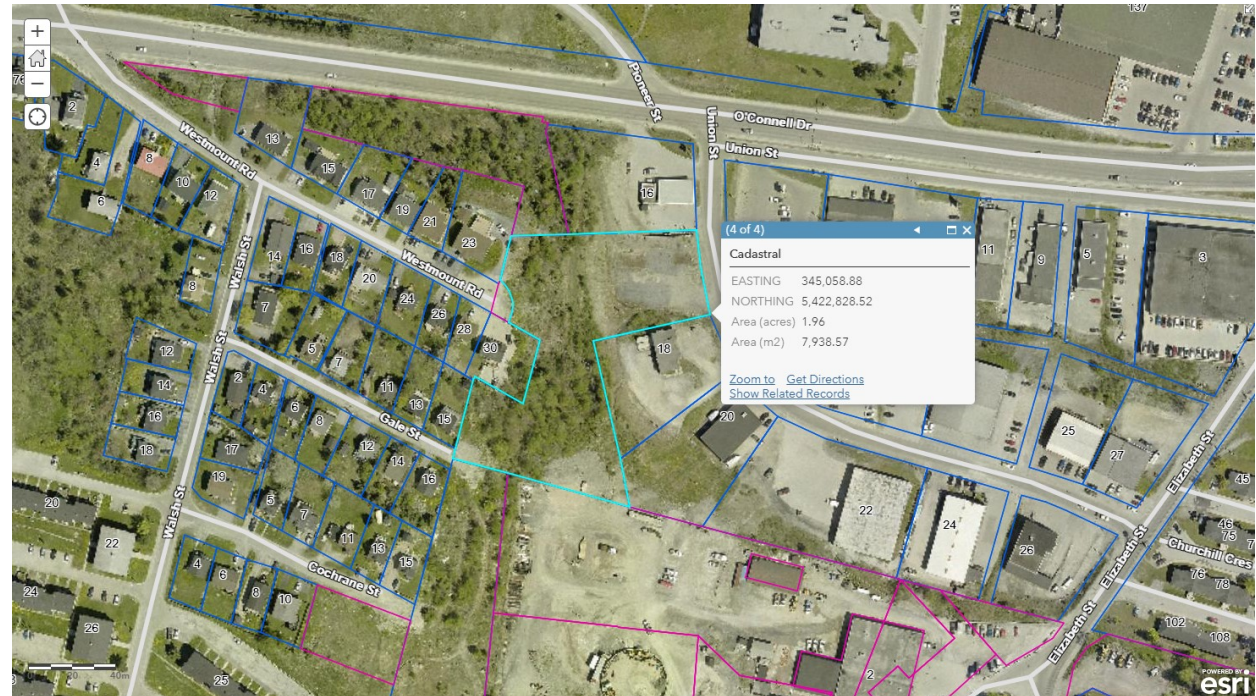
**Sewer Available:** Yes

**Owner:** Private



# POSSIBLE LAND FOR DEVELOPMENT

**Parcel ID:** 049933  
**Location:** Union Street  
**Zone:** Light Industrial (LI) & Open Space (OS)  
**Approximate Size (m<sup>2</sup>):** 7,939  
**Approximate Frontage (m):** 40  
**Approximate Depth (m):** 85  
**Water Available:** Yes  
**Sewer Available:** Yes  
**Owner:** Private



## USEFUL LINKS AND CONTACT INFO

- To view the City of Corner Brook Development Regulations please visit the link below
  - <http://www.cornerbrook.com/development-regulations-guidelines/>
- To view the City of Corner Brook Zoning Map please visit the link below
  - <http://www.cornerbrook.com/maps/>
- For Purchasing City Property and/or Selling Property to the City please contact:

Brandon Duffy, Supervisor of Land Management

City of Corner Brook

PO Box 1080

Corner Brook, NL, A2H 6E1

Ph: 1-709-637-1544

Cell: 1-709-632-9509

Fax: 1-709-637-1514

Email: [bduffy@cornerbrook.com](mailto:bduffy@cornerbrook.com)

